

Algorithmic Doodle Art 15: Buds

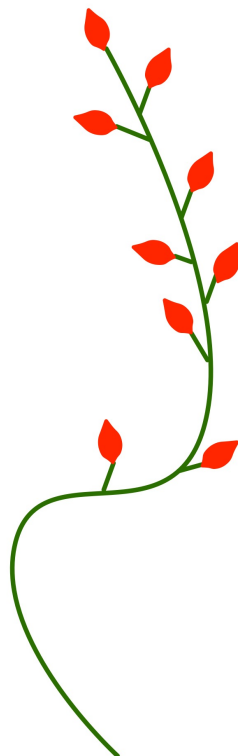
Landscapes in films are often computer generated. Ever wondered how they do it? Next time you find yourself doodling, draw an algorithmic doodle and explore algorithms for drawing nature including fantasy landscapes. Here is an example Doodle Algorithm.

To Draw a Rose Bush with Buds:

1. Draw a wavy green line with small lines sticking out at angles from it on either side. Draw red buds from the end of every line (as shown).
2. DoodleDraw from that line as follows.

To DoodleDraw from a chosen line:

1. Draw a new wavy line from any point on the chosen line into any empty space. It should have similar lines sticking out and buds.
2. Choose a new existing line
3. DoodleDraw from that line.



Different algorithms give different looking trees, grasses, ferns, snowflakes, crystals, so now try inventing your own doodle art algorithms and see how realistic the drawings you end up with are.